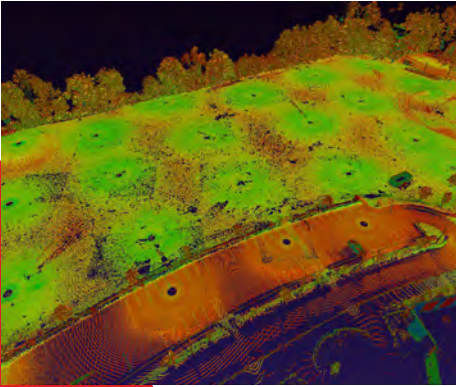


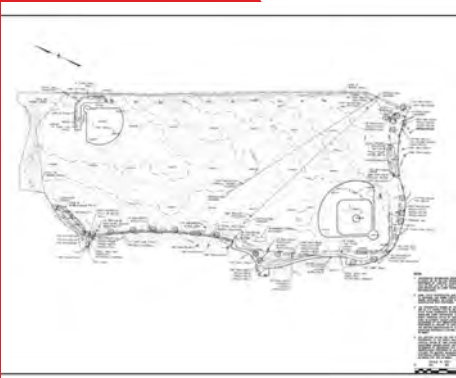
CASE STUDY

Diamond Middle School - Lexington



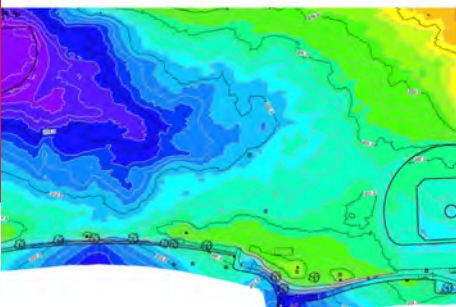
DOCUMENT

The fields at the Diamond Middle School in Lexington are used by a variety of baseball, softball, and soccer programs. Due to the popularity of the fields, a complete renovation was realized by the Town and worked into their budget. An up-to-date survey of the existing conditions was needed to get the project started.



DESIGN

Given the highly accurate and fast data collection that 3D laser scanning provides, LandTech completed the survey in one day. The data from the laser scanning was then processed in the office into a single point cloud file that was used to create a 2D Existing Conditions Plan.



DEVELOP

By utilizing 3D laser scanning, the topography can be reviewed at a micro-level and areas in need of leveling can easily be highlighted. Repairs to isolated areas can then be done much easier without the need of completing an entire field renovation.