

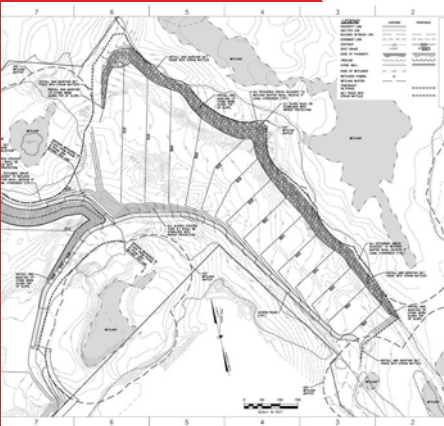
CASE STUDY

CPI Solar - Westford, MA



DOCUMENT

This privately-owned solar project is located on 22 acres of land in Westford and generates 4.5 megawatts. It was the largest private solar field in Massachusetts at the time of its construction in 2012. Located on the site of a former construction staging area for the Route 3 widening project, the area had been mined of material for construction of Route 3 and subsequently filled with excess material from several Boston area construction projects. A major grading and stabilization effort was required to shape the area to the proper grades in order to optimize placement and orientation of solar panels.



DESIGN

A unique design of structural filter fabric and crushed stone assured the proper stabilization and compaction of fill material while also working to address drainage control and intrusion of vegetation within the array field. LandTech provided site design and engineering, site permitting and construction layout services.



DEVELOP

Working with project owners and developers Cathartes Private Investments and Nexamp, LandTech Consultants is proud to be a part of the project team on this socially responsible and sustainable groundbreaking green project. With 14,000 solar panels, this park generates enough electricity to power more than 600 homes.