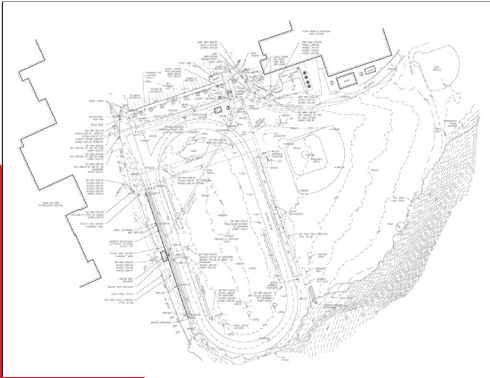


CASE STUDY

Ayer Shirley Regional High School

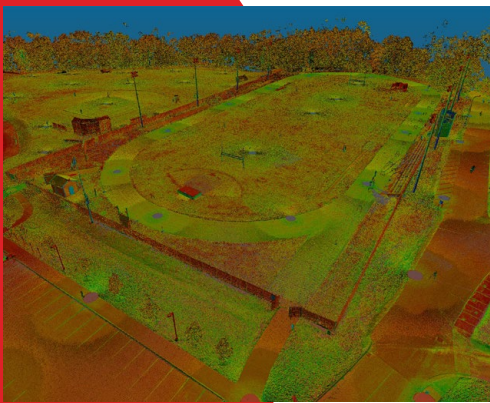


Location: Ayer, MA | Services Rendered: 3D Laser Scanning



DOCUMENT

The athletic complex at the Ayer Shirley Regional High School had not been renovated since it was built in the 1950s. Facing ADA noncompliance and safety issues within the football field and track, the school was forced to find other accommodations for home games until a complete renovation could be completed. The new design by Activitas includes a synthetic turf field, expanded track, renovated grass playing field/baseball diamond, new press box, bleachers, and ticket booth.



DESIGN

LandTech was hired by Activitas to provide an existing conditions survey that would later be used by the landscape architect in their preparation of construction drawings. By utilizing 3D laser scanning, LandTech was able to complete the field work within two days. The laser scans were then used to produce the existing conditions plan and a highly accurate 3D surface which was crucial in designing ADA compliant access to the complex.



DEVELOP

Construction continues and is expected to be complete by October 2022. Since LandTech completed the initial survey work, we worked with the site contractor during construction to assist in layout of the press box and ticket booth buildings. Bringing together all of the disciplines helped this project start and stay on schedule during the entire process. A success from start to finish!