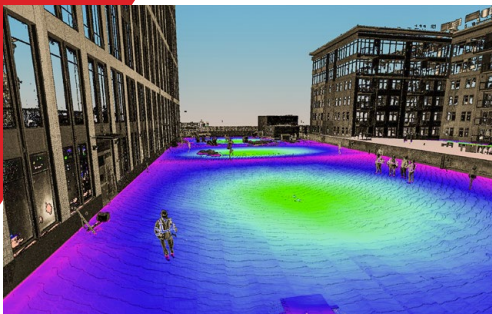
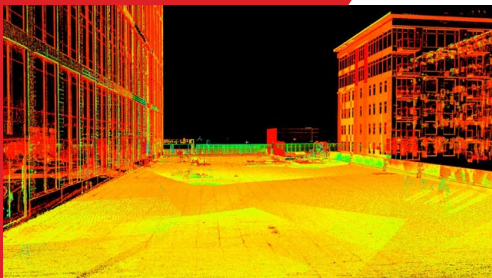


CASE STUDY

PUMA North American Headquarters



Location: Somerville, MA | Services Rendered: 3D Laser Scanning



DOCUMENT

The newly built Assembly Row in Somerville, Massachusetts was chosen as the new location of PUMA's North American Headquarters. The 150,000 square-foot facility will support 450 employees. Construction began in November 2020 and was completed by 2022.

"Hiring LandTech to provide laser scanning services for the roof deck at the new PUMA North American Headquarters gave us the highly accurate information we needed to move forward with construction. LandTech made themselves available based on our schedule after several weather-related delays. They promptly delivered the deck elevations within a week of the survey, helping to keep our schedule on track." -Scott Koesterich, President, Atlantic Sports Group

DESIGN

LandTech was hired to laser scan the roof of the 19,000 square-foot roof deck to support the floor pedestal design. All roof penetrations were located as well as the building itself to aid the contractor in planning and design.

DEVELOP

Utilizing the resulting point cloud from the laser scans, LandTech prepared a topographic plan showing spot elevations on a 5 foot grid. With the elevations, the contractor was able to layout and confirm elevations and locations which saved time and provided a successful outcome.