

Commercial Real Estate Solutions

For three decades, LandTech Consultants has been providing civil engineering, land surveying, laser scanning and modeling services to the commercial real estate industry. Our commitment to innovation and technology keeps LandTech at the forefront of advanced design and cost-saving construction methods. Our mantra of 3D - Document, Design, Develop is evident in all of our services, from high definition laser scanning to three dimensional engineering infrastructure design to building information modeling and machine control modeling.



ACQUISITION DUE DILIGENCE

Intelligence during the acquisition due diligence process is critical to a mutually successful deal. Providing accurate plans and models for buyers and sellers helps provide transparency in the transaction, removing the challenge of outdated documents and plans. Ultimately, allowing both parties to accurately price the assets value and necessary work into deals.



TENANT FIT-OUTS

Better understanding of the building systems and clear clash detection, all with flexible and universally applicable models, provide both tenant and landlord with the knowledge to find the best solutions to balance the needs of the new tenant's operations with those of the entire building as a whole. All this while also ensuring the lease square footage is accurate to the fraction of an inch.



SYSTEM REPLACEMENTS

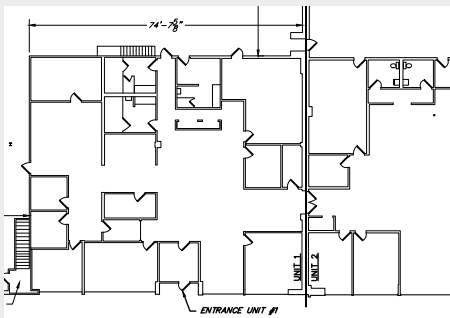
One of the most costly elements in the contractor bid process is a lack of clarity in the scope. Providing contractors with full transparency and bid-ready models ensure apples-to-apples bids and avoid costly change orders for items that should be captured in the original bid. Removing uncertainty around equipment and crew access, clash detection, and other costly unforeseen issues ensures a smooth process and reduced cost for the contractor and the landlord.



PROPERTY MANAGEMENT & ENGINEERING

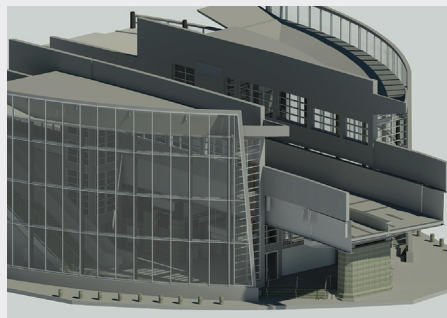
Increasing day-one effectiveness and reducing on-boarding time are critical steps to a successful transition to a new Property Management & Engineering relationship. By providing accurate, universally applicable building models using GIS that are easily integrated with any asset management platform leads to true, full-fledged building intelligence, all while giving full field access to maintenance staff.

One of the basic fundamentals of LandTech is our ability to meet clients' needs, no matter the level of complexity in the desired deliverable, by providing the desired model or a fully integrated solution.



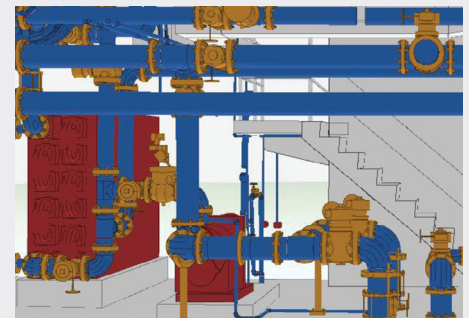
2D Model & Plans Set

2D plans set to provide pinpoint accuracy of building elements and square footages.



3D Modeling & LIDAR

Laser-driven 3D model with accurate modeling of all building systems and associated assets throughout the building



Fully BIM & GIS Integration

Integrating building systems and assets throughout the building into asset management platforms for full building management; field accessible to maintenance staff.

Call 978.692.6100 or email info@landtechinc.com today to get started.